



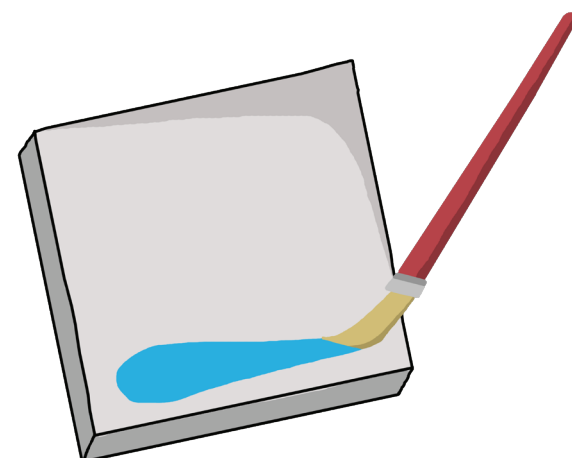
DIRECTIONS

1 Each bottle needs to be mixed thoroughly via shaking or stirring with a clean palette knife. Add brushing medium or water if paint appears too thick and difficult to mix.



2 Squeeze the required amount onto a tile or paint palette. It is not recommended to continuously dip the brush into the paint container, as this may contaminate the color.

3 If necessary, stir in more brushing medium to achieve the desired consistency. The paint should flow from the brush and not stick to the bristles.



APPLICATION

One Strokes are intended to be painted once hence the name 'One Stroke'. They are ideal for any detail or brush design work with the finish being translucent. The colors can be applied with Underglazes and Café Colors on the same item or mixed. The glaze must be brushed on after.

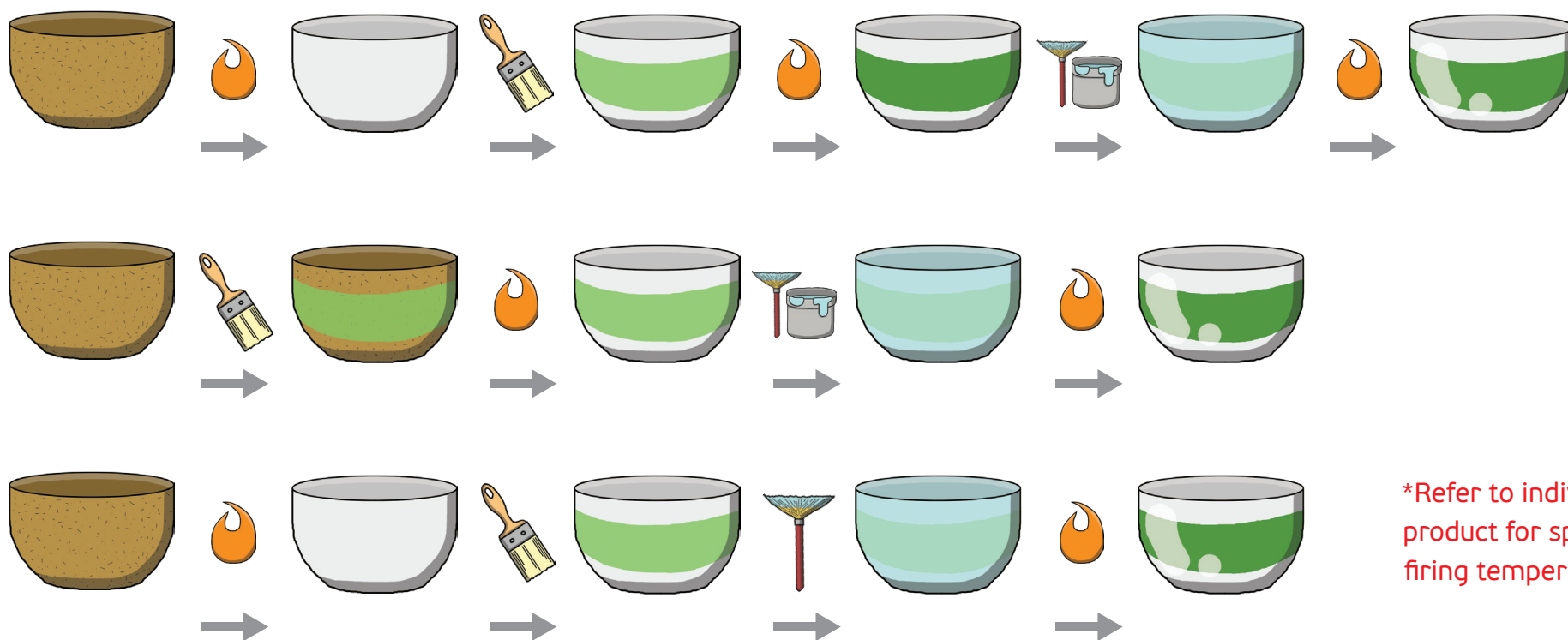
BODY One Strokes may be applied to greenware or bisque. They may also be applied to mid fire and stoneware bodies and then glazed. Refer to the picture guide below on firing and glazing stages

FINISH One coat creates a transparent finish, two coats a semi-transparent and three coats a bright opaque finish. Apply coats one at a time, allowing each coat to dry. Ensure coats are not too thick.

COLORING → CLEAR GLAZING → FIRING PROCESS

START

FINISH



*Refer to individual product for specific firing temperature.

KEY: Greenware Bisqueware Finished ware Fire Underglaze Dip or brush clear glaze